

URBAN RESORT



CONDOMINIUM • ORCHARD



A	#14-01	A (M)	#14-02
A	#13-01	A (M)	#13-02
A	#12-01	A (M)	#12-02
A	#11-01	A (M)	#11-02
A	#10-01	A (M)	#10-02
A	#09-01	A (M)	#09-02
A	#08-01	A (M)	#08-02
A	#07-01	A (M)	#07-02
A	#06-01	A (M)	#06-02
A	#05-01	A (M)	#05-02
A	#04-01	A (M)	#04-02
A	#03-01	A (M)	#03-02

B	#13-03	C	#13-04
B	#14-03	C	#14-04
B	#12-03	C	#12-04
B	#11-03	C	#11-04
B	#10-03	C	#10-04
B	#09-03	C	#09-04
B	#08-03	C	#08-04
B	#07-03	C	#07-04
B	#06-03	C	#06-04
B	#05-03	C	#05-04
B	#04-03	C	#04-04
B	#03-03	C	#03-04
B	#02-03	C	#02-04

Sky Terrace / Gymnasium / Clubhouse #02-02

Swimming Pools, Landscape and Recreational Deck

Basement Carpark

LEGEND

RECREATIONAL DECK

- A Garden Pavilion
- B BBQ Pits
- C Children's Play Area
- D Children's Water Play Area
- E Children's Pool
- F Jacuzzi Pool
- G Swimming Pool
- H Pool Deck
- I Lap Pool
- J Guard House
- K Spice Garden

BLK 32 SECOND STOREY

- Multi-purpose Room
- Gymnasium
- Male & Female Changing Rooms
- Steam Rooms
- Sky Terrace



CAIRNHILL ROAD

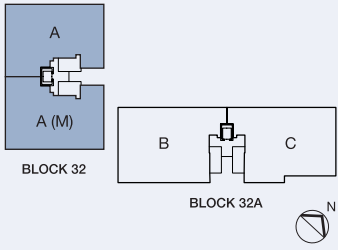
TO



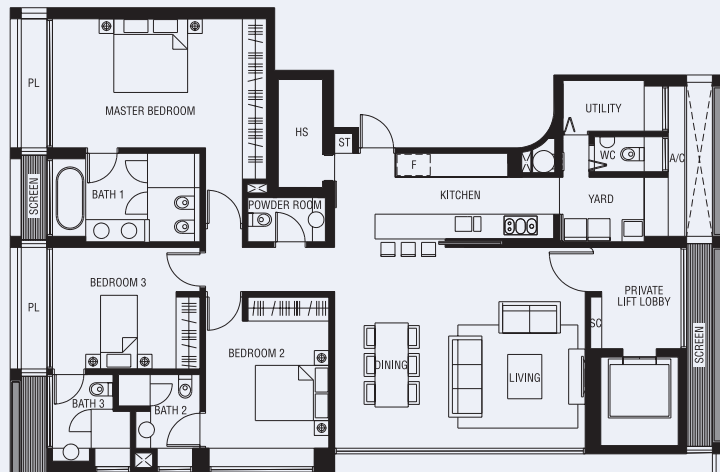
Type A

197 sqm / 2,121 sq ft

#03-01 to #17-01

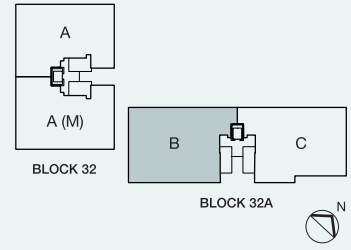


Type A (M)



Type B

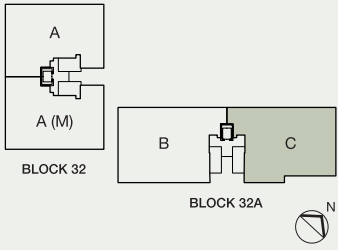
237 sqm / 2,551 sq ft
#02-03 to #16-03



Type C

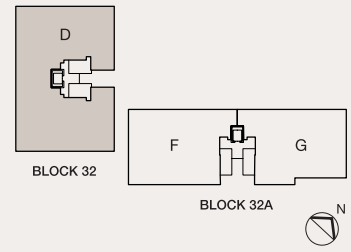
235 sqm / 2,530 sq ft

#02-04 to #16-04



Type D

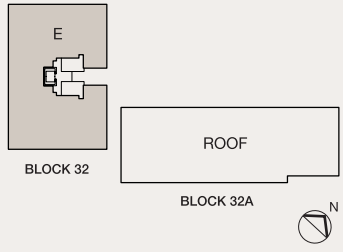
406 sqm / 4,370 sq ft
#18-01



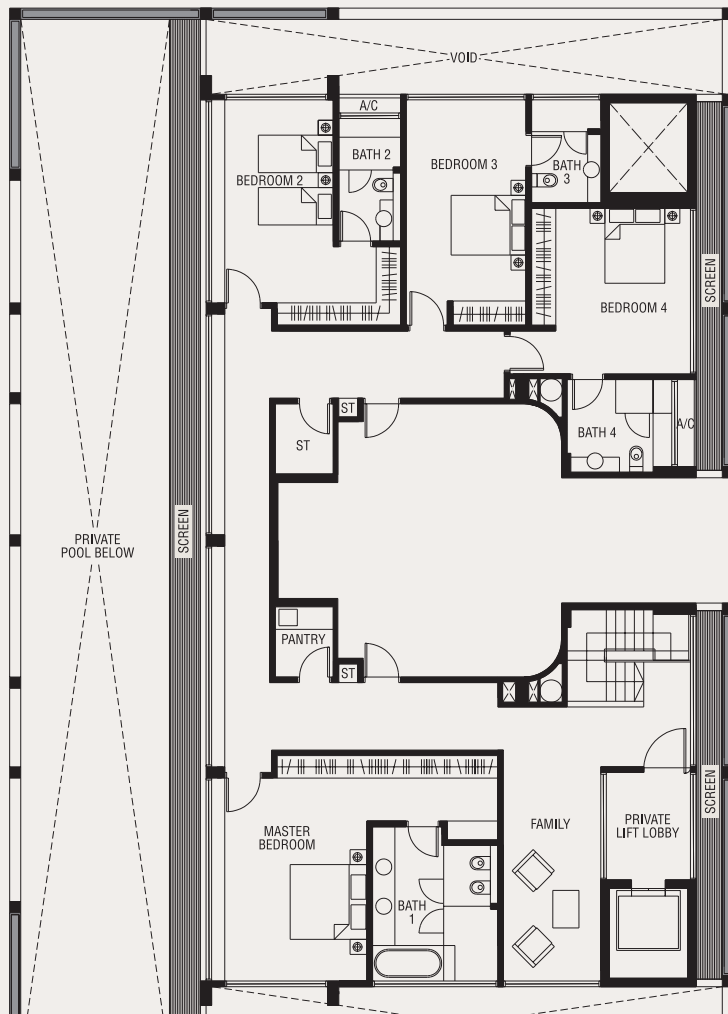
Type E

637 sqm / 6,857 sq ft

#19-01



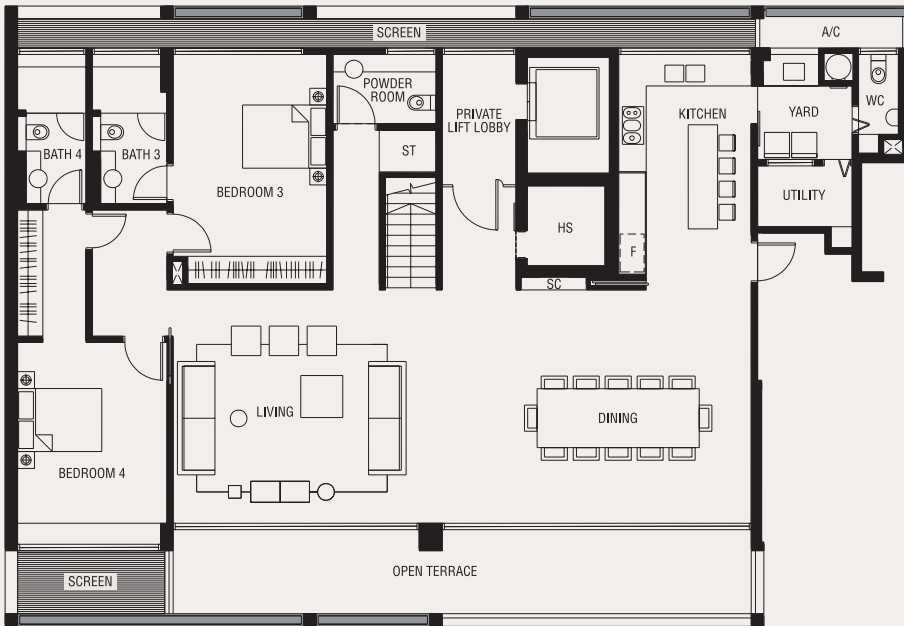
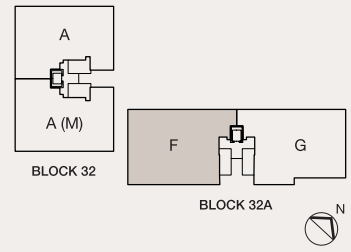
LOWER



Type F

457 sqm / 4,919 sq ft

#17-03



LOWER

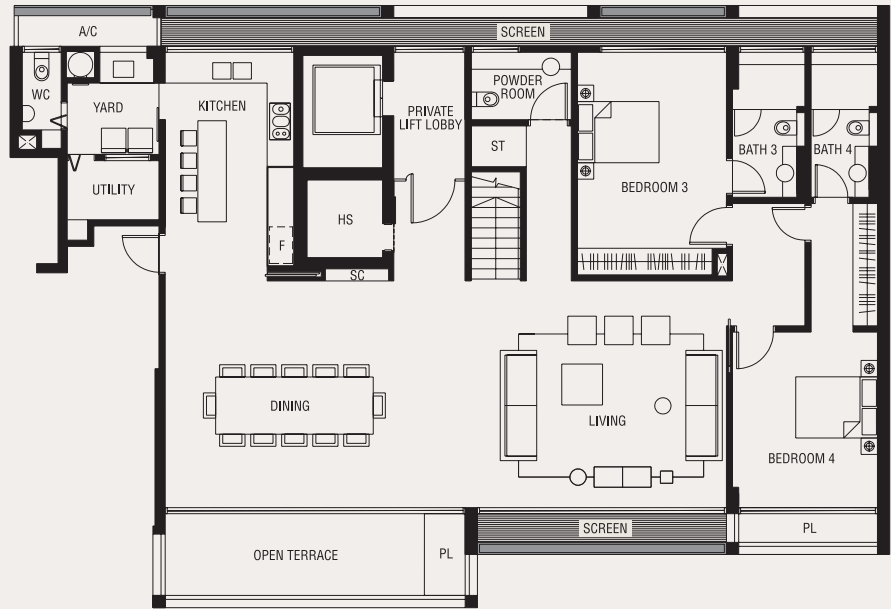
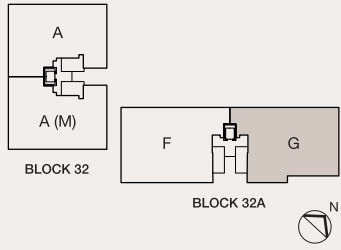


UPPER

Type G

436 sqm / 4,693 sq ft

#17-04



LOWER



UPPER



Cap/taLand

Enquiries: 6826 6800
www.urbanresortorchard.com.sg